

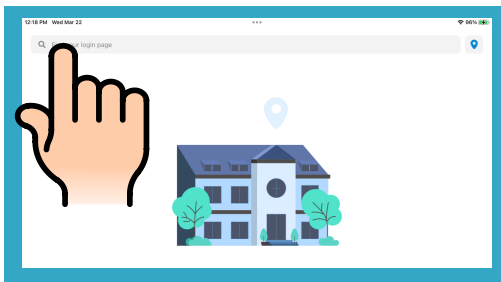
Waterford Reading Academy on Student iPads

1



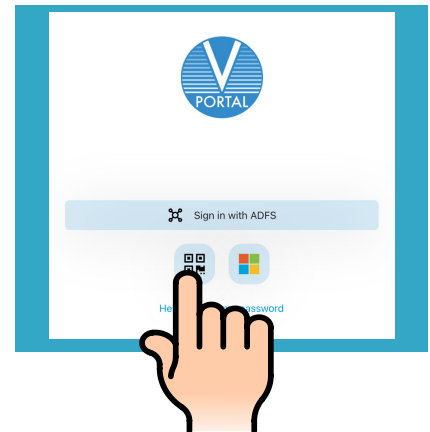
- Open the ClassLink app on student iPad.
- Waterford does not work properly by going directing through the Waterford app, but the app DOES need to be downloaded onto the student's iPad.

2



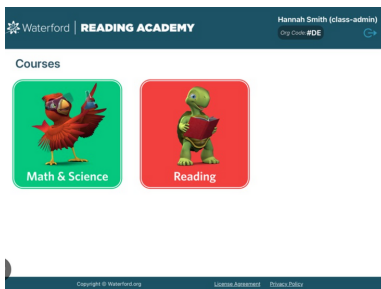
- Type your school's name in the box.
- Tap on your school name when it appears on the list.

3



- Tap the Quick Card icon and scan student's Quick Card code.

4



- Once student's VPortal opens, find the Reading Academy tile.
- Tap tile in VPortal and the Waterford app will open on the iPad.

5



- Teach students to use the Class Link app not the Waterford app when accessing the Waterford software.

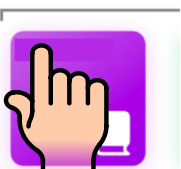
6

To lock students in Waterford when using Apple Classroom, follow steps 7-9.



7

Classes



- Complete steps 1-4 on all student iPads BEFORE locking students into app.
- Have students turn on their iPads and get to the home screen.
- Open Apple Classroom on the Big Apple and tap to start class.

8

- Tap the stack of papers
- Tap the Class Link app from the app list.
- Tap the stack of papers again.
- Tap the toggle bar to LOCK position.
- Tap the Waterford app from the list.

9

Note:

It is helpful to have students place their iPads face down on the desk after you start your class through Apple Classroom. Then complete the directions in step 8. It takes a little time for student iPads to receive the commands to open and lock Waterford.